

PEAK LOAD MANAGEMENT



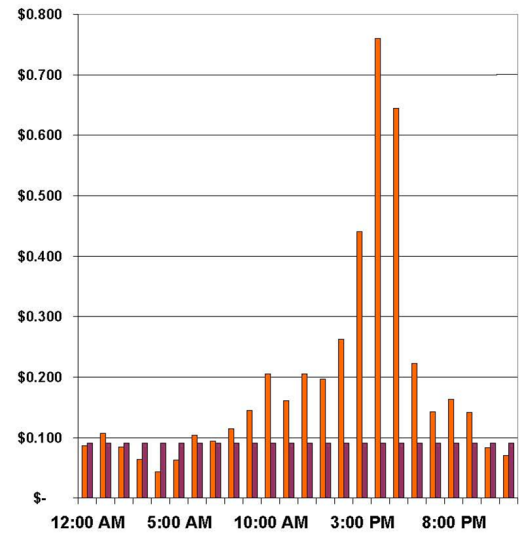
Montgomery County Public Schools (MCPS) has instituted a late afternoon curtailment of air conditioning operations in schools each summer from 4:00–5:00 p.m.

The energy we use during peak hours in the summer affects MCPS’ electricity costs year round. Because these peak demand periods drive our price of electricity for all 12 months of the year, conserving energy is vitally important.

**EVERY DAY, 4:00 – 5:00 P.M.
JUNE 17 – AUGUST 16, 2024**

The chart shown reflects the increase in kilowatt hour pricing during the peak hours of 3:00 – 5:00 p.m. on a typical hot August afternoon. On this particular day, the electric demand approached, and briefly exceeded, the capacity of the PJM (Pennsylvania-Jersey-Maryland) power grid to generate and transmit electricity, resulting in a voltage reduction, or brown-out, to protect the system. At such times, the real-time price of electricity becomes very costly, rising from the normal \$0.12/kWh and spiking up to \$0.75/kWh. This is a clear signal to customers to shut down all non-essential uses of power.

PJM REAL-TIME PRICE PER KILOWATT HOUR



- ▶ Starting at 3:00 p.m., your staff should turn off all non-essential lights and equipment.
- ▶ From 4:00–5:00 p.m., each building’s central plant equipment is curtailed for one hour.
- ▶ You can help by not scheduling activities from 3:00–5:00 p.m. during the summer.

Thank you for doing your part to help MCPS save on electricity costs, and for freeing power for others with essential needs while helping to preserve the environment.



Division of Sustainability and Compliance
 45 West Gude Drive, Suite 4000
 Rockville, Maryland 20850
www.MCPSsustainability.org
sustainability@mcpsmd.org 240-740-3210