

Career Spotlight

Landscape Architect



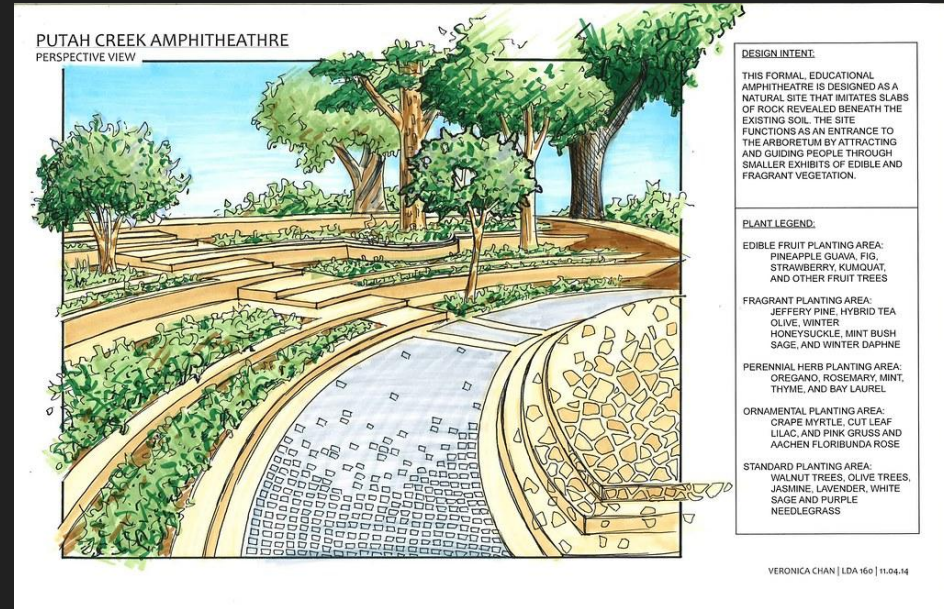


LANDSCAPE ARCHITECTURE

SQU
ARE
ONE

What is a Landscape Architect?

Landscape architects analyze, plan, design, manage, and nurture the built and natural environments. Landscape architects have a significant impact on communities and quality of life. They design parks, campuses, streetscapes, trails, plazas, and other projects that help define a community.



Landscape Architect vs. Landscape Designer

Landscape architects must be prepared to work on large projects such as public spaces, and be knowledgeable about issues such as grading, constructing structures and drainage.

Education: Bachelor's or Master's degree, must be licensed.

American society of Landscape Architects

<https://www.asla.org/aboutlandscapearchitecture.aspx>

A landscape designer, on the other hand, typically has more knowledge in different aspects of gardening and specialized plant knowledge. Design maintenance plans in addition to designing garden and landscape layouts.

Education: Associates or Bachelor's degree in landscape design, plant and soil science or horticulture, license usually not required.

<https://www.youtube.com/watch?v=GcEqYPaRvSU>

DHS courses to support this goal:

Certified Professional Horticulturist -Career Completer/Concentrator:

Foundations of Horticulture

Plant Production

Landscape Management

Environmental Horticulture Internship

Other courses: Foundations of Art, Advanced math courses

See Ms. Mayhew if you have questions: Lori_L_Mayhew@mcpsmd.org

The mission of Career and Technical Education (CTE) is to empower students to be successful citizens, workers, and leaders in a global economy while providing lifelong learning with academic and technical preparedness to succeed in their chosen careers.